

## Add over 100 plug-ins to your interface with +DSP

While all Expanded units include the Basic 2d processing bundle, you can add a +DSP license to your box at any time. Adding a +DSP license will allow you to take full advantage of the processing power of the DSP in your interface. The ease of inserting Plug-ins directly into mixer channels with the v.5 Console makes using +DSP a snap. If your 2d Expanded unit doesn't already include +DSP, you can add a license without any physical changes to your hardware.

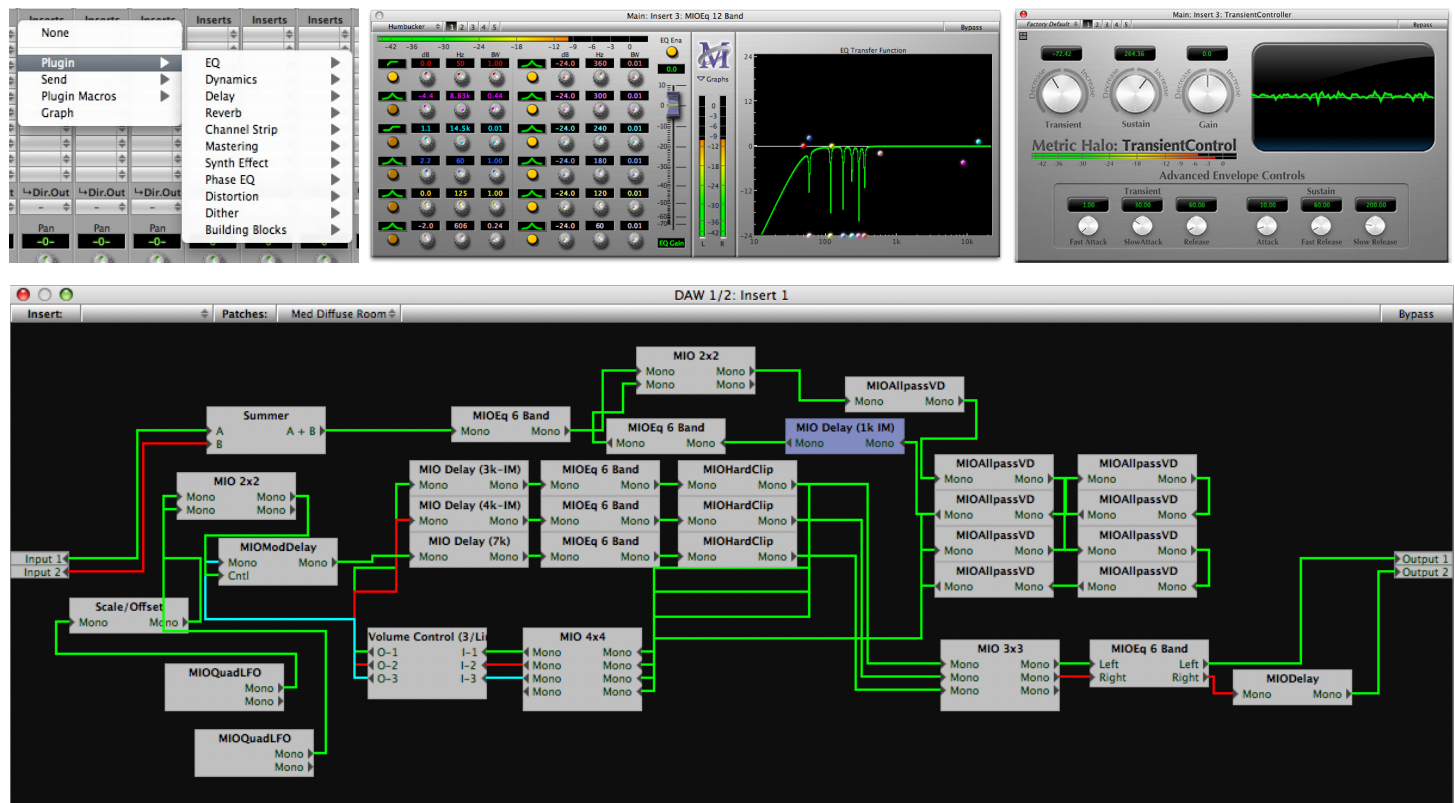
The +DSP license includes a variety of additional Plug-ins including Multi-band EQs, Compressor, Limiter, Distortion Processors, and many more. With the +DSP license, you also gain access to insertable graphs which allow you to build your own "Secret Weapon" processors — wrapped up, phase compensated graphs of Plug-ins that may be re-inserted on demand.

Finally, the +DSP license adds many bonus Plug-in Macros — insertable, pre-configured processors, including Guitar Amp Models, Guitar Processors, Parallel Compressors and Limiters, Mid/Side Mastering processors, Vintage-style reverbs and many more...

All this is in addition to the Character, Multibus Mixer, Surround Support, Monitor Controller, MIOStrip, M/S Decoder, Short Delay, Dither and HaloVerb plug-ins that come with every 2d card.

## System-wide +DSP Licensing

MIO Console v.5 automatically extends the +DSP license on any attached box to all 2d Expanded boxes attached to your system while the boxes are attached. What this means is that you can use any +DSP Plug-in or macro on any box in your system, as long as at least one +DSP licensed box is attached. If you need to store +DSP Plug-ins in persistent states or tend to split your boxes into multiple systems, you will need to license each box that needs to use the +DSP license independently.



<b>Plug-ins included with the +DSP license</b>	
<b>Building Blocks</b>	<b>2d Effects Macros</b>
TransientController	Autoflanger
MIO EQ 6	Autoflanger 2
MIO EQ 12	Autoflanger 3
MIO Comp	Cool Mono Echo
MIO Limit	LoFi Mod Echo
MIO State Variable Filter	Mono Rotary
NC State Variable Filter	Slap Delay
Linkwitz-Riley Band Split Filter	Vibrato+Tremolo
Delays Family (15 plug-ins)	Stereo Rotary Speaker
MIO Simple Pitch Shifter	<b>2d Reverbs Macros</b>
Allpass filters (2 plug-ins)	Diffuse Prime
MIO Soft Clip Family (3 plug-ins)	Diffuse Room
MIO Nonlinear Map Family (4 plug-ins)	Early Diffuse Room (no tail)
MIO Volume Control Family (16 plug-ins)	Hall 1
MIO A/B Switch Family (16 plug-ins)	LongVerb
MIO M/S Processor	Med Diffuse Room
Static Matrix Family (5 plug-ins)	ModVerb
Channel op Family (5 plug-ins)	Small Diffuse Room
Math Family (9 plug-ins)	<b>2d Mastering Macros</b>
Envelope Family (2 plug-ins)	Parallel Compressor
Oscillator Family (6 plug-ins)	Parallel Limiter
MIO Mod Delay	Mid-Side Compressor
Insertable Graphs	Mid-Side EQ
<b>2d Amp Macros</b>	Mid-Side Limit
Bass Head	Stereo Parallel Limiter
Bass Head Shape 1	<b>2d Pedals Macros</b>
Bass Head Shape 2	Nezumi
British Mil Spec	Nezumi Less Gain
British Mil Spec Bright Cab	Screamer
British Mil Spec Grind	Cabinets
British Mil Spec Light Grind	Closed 2x12
British Mil Spec Rhythm	Closed 2x12 with Air
British Mil Spec+Vibrato+Trem	4x12 Cab
MH Clean	<b>... and the 2d Expanded Package</b>
MH Clean Tweed	MIOStrip
MH Hi-Gain	M/S Decoder
Small Dark	Short Delay
Small Dark No Cab	Dither
Small Tweed Crunch	HaloVerb
Small Tweed Touch O' Dirt	Character